

The **All Abilities Play Space (AAPS)** project is on track to commence construction later this year at **Beaton Park** on the Nedlands foreshore

It has been designed by a world class play landscape and playground architect - Fiona Robbe and Associates and has achieved its initial fund raising target of over \$1.5m from individual donors and Lotterywest.

A new community fund raising drive has just commenced with a target of an additional **\$2.5m**. This amount would enable all three stages of the project to be completed at the same time.

A community partnership project, the play space is located on a premier site - **Please view these short videos:**



[Verity James describes the AAPS](#)



[Justin Langer is a huge supporter](#)

Donate:



Help make the dream come true!

The project involves four Rotary Clubs:



Nedlands,



Subiaco,



West Perth,



Matilda Bay,

plus the [City of Nedlands](#), [Inclusion WA](#), Disability Advisory Committee, [Australia's Bridge](#), [Wood and Grieve](#) engineers, local disability workers, families and community members, with development of the designs based on extensive community involvement and

If you would like to help build this innovative state of the art project -----

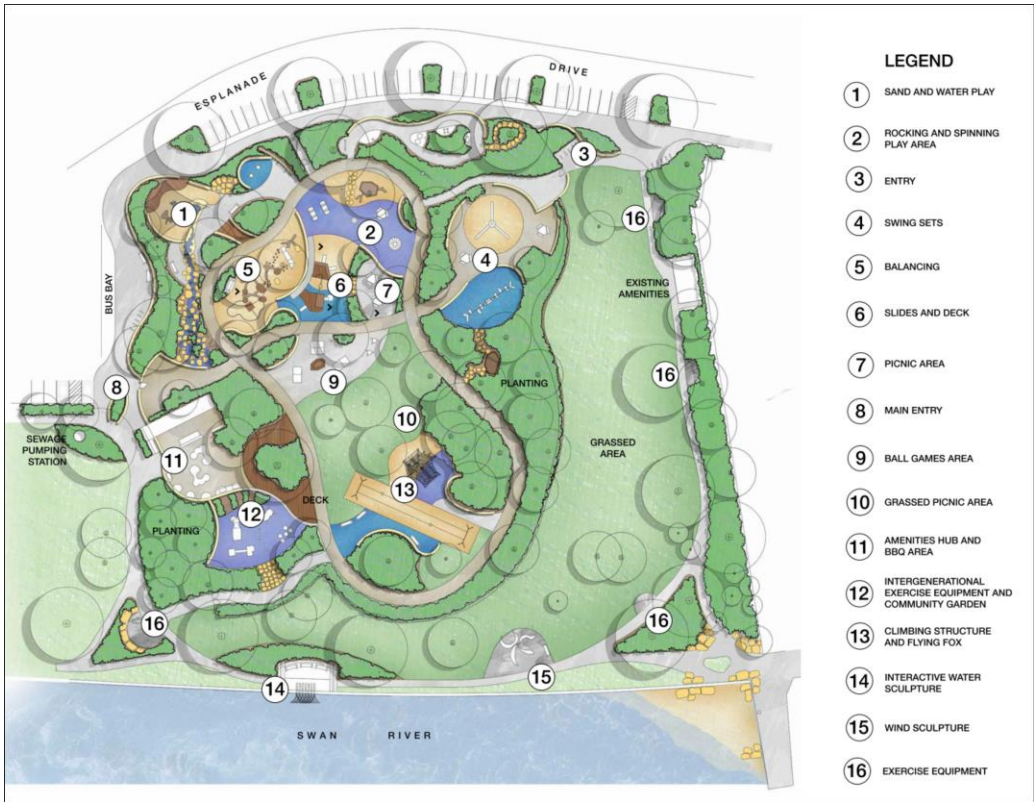
Sponsorship enquiries: please contact Angus Buchanan, West Perth Rotary, on a.buchanan@curtin.edu.au.

Pro Bono work: please contact Margot Matthews, Australia's Bridge, on margot.matthews@australiasbridge.org.au.

This is a **10,000 square metre** play space designed for people of **all ages and abilities**. The space will have 17 play zones including sand play, nature play, active spinning, active climbing, decks and slides, music play and much more.

The All Abilities Play Space is for everyone! Children, teenagers and adults with disability, their families and carers, have all been involved in the design, to make sure it works for everyone. Above all it will be a vibrant community activity space where everyone may meet, play, socialise and use play equipment.

Teenagers and adults often feel excluded from playgrounds, partly because most conventional play equipment is only designed to take the weight of a child. In contrast to this, the All Abilities Play Space will welcome teenagers and has also been designed with the needs of adults in mind. No more boring visits to the park for Mum and Dad - there will even be play equipment for seniors, so grandparents can have fun at the park too. The high quality surrounding fence will give parents peace of mind!



Donate:



Help make the dream come true!